

The background of the image is a dense, close-up view of white, curly pasta, likely farfalle or similar, filling the entire frame. The pasta pieces are intertwined and create a complex, textured pattern of light and shadow.

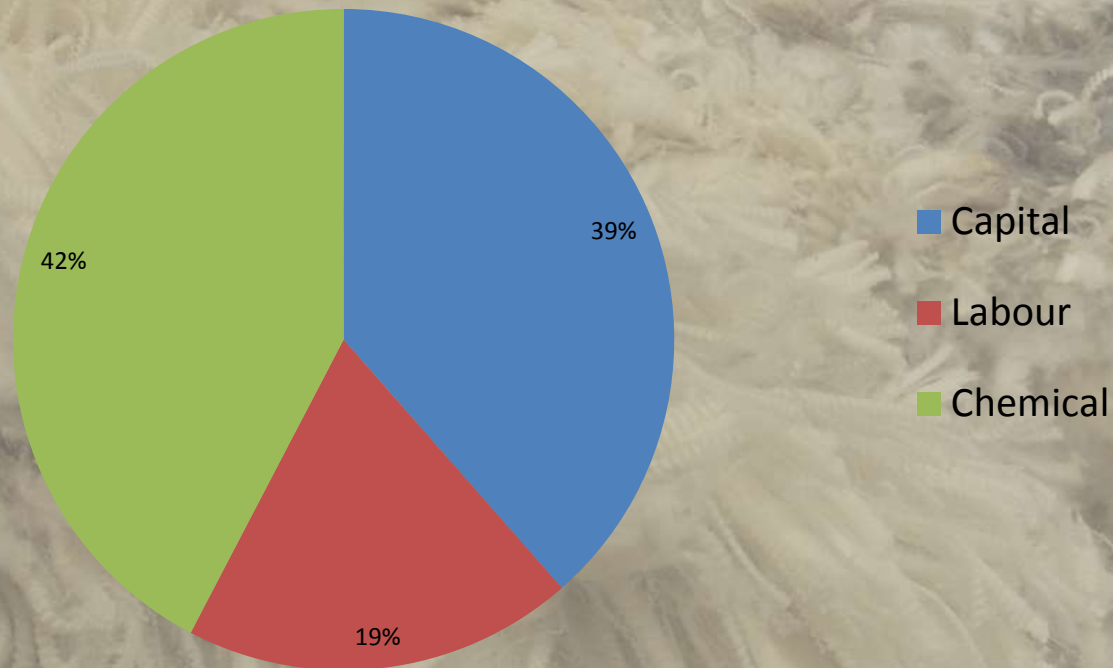
Calafate 2017-2018 Season Review

James Bryan

- During 2017, £160,000 was budgeted by the previous assembly for the control of Calafate throughout the islands over a 4 year period.



Calafate Expenditure 2017-18



- Total approx. £36,600 spent out of a budgeted amount of £40K
- Major budget items included Sprayer £13K, Twin axle Trailer £3.8K, chemical totalled £15,500

Efforts for 2017-18

- All areas which were targeted for this year were successfully controlled, which were around Stanley, Island Harbour and Cantera House.



Efforts for 2017-18

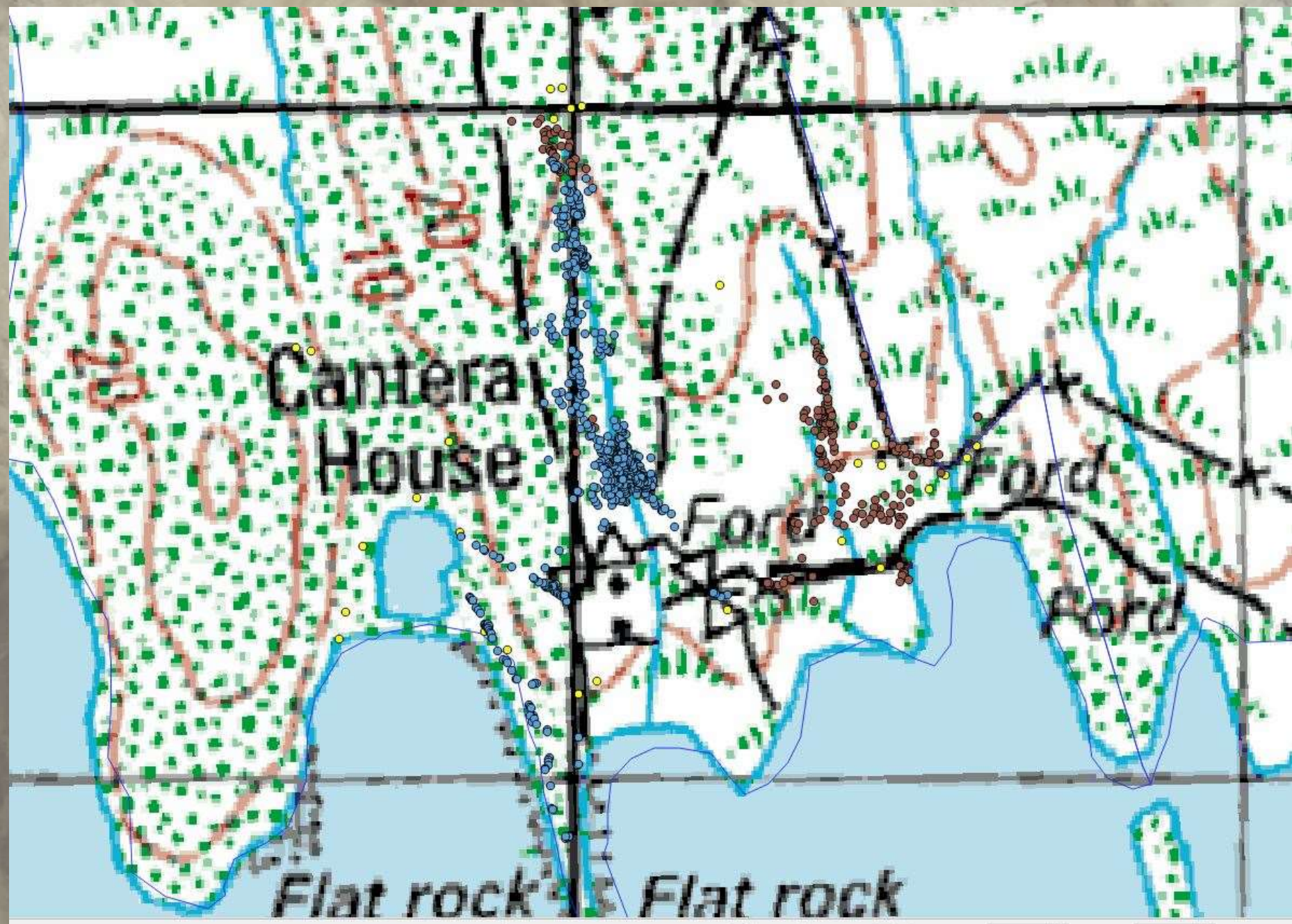
- All areas which were targeted for this year were successfully controlled, which were around Stanley, Island Harbour and Cantera House.
- DoA team totalled 200 hours of labour and 11,000L of chemical mix was applied.



Efforts for 2017-18

- All areas which were targeted for this year were successfully controlled, which were around Stanley, Island Harbour and Cantera House.
- DoA team totalled 200 hours of labour and 11,000L of chemical mix was applied.
- Island Landcare also were contracted to control Calafate on Keppel, where they spent 66.5 labour hours, over 80ha.





Next Season

- Advertising currently for staff. Looking for 4 people full time Nov-Feb
- Aiming to start with a survey of areas controlled this season to 'mop up' any plants not already controlled, as well as treating any new plants. Followed by "zoning in" on the main infestation around Port Sussex house.
- The DoA is working with SAERI to potentially use a UAV (drone) fitted with high resolution cameras as a means of identifying and measuring calafate. If this works, this technology will greatly enhance the effectiveness of the control programme going forward.

Thanks

All the Landowners involved

Our team of Sprayers:

Erica Berntsen, Michael Goodwin, Rhys Metford,
Chris Stenning.

Island Landcare – Sally and Ken

CALAFATE: SEE IT, REPORT IT

We are wanting the public to get in touch with sightings of calafate anywhere in the Falkland Islands



Calafate is an invasive weed spreading throughout the Falklands.

The spines can become entangled in the wool of sheep, causing animal health issues as well as threatening wool production.

Calafate is a spiny evergreen shrub with woody stems up to 2m tall. Bright yellow flowers up to 1cm across are borne singly in spring and early summer and later produce purple berries about 8mm in diameter. Leaves are oval, 10-25mm long.

Spines are straight, 10-15mm long, in T-shaped groups of 3. It sometimes forms very low creeping shrubs which are hard to spot in the dense white-grass. Seedlings sometimes have spiny, holly-shaped leaves.

If you see any, please get in touch:

Tel: 27355

Email: jbryan@doa.gov.fk

We would appreciate any photographs you may be able to take should you think you have found any as this will help us to identify the plant correctly.



Department of Agriculture
Falkland Islands Government