



**Department of  
Agriculture  
2018/19 Business Plan  
and Priorities**

Engagement

Research and  
Innovation

2018/19

Policy and  
Regulation

Enabling /  
Services

### Participation in overseas organisations and forums

- WMBF
- IWTO

### Publications

- Best practice guidelines
- Pasture plants guide

### Farm Business Benchmarking

### Workshops and Field Days

### Participation in relevant local organisations and forums

- FIDC
- FLH
- FIMCo
- RBA
- Education

### Participation of Falklands Agriculture

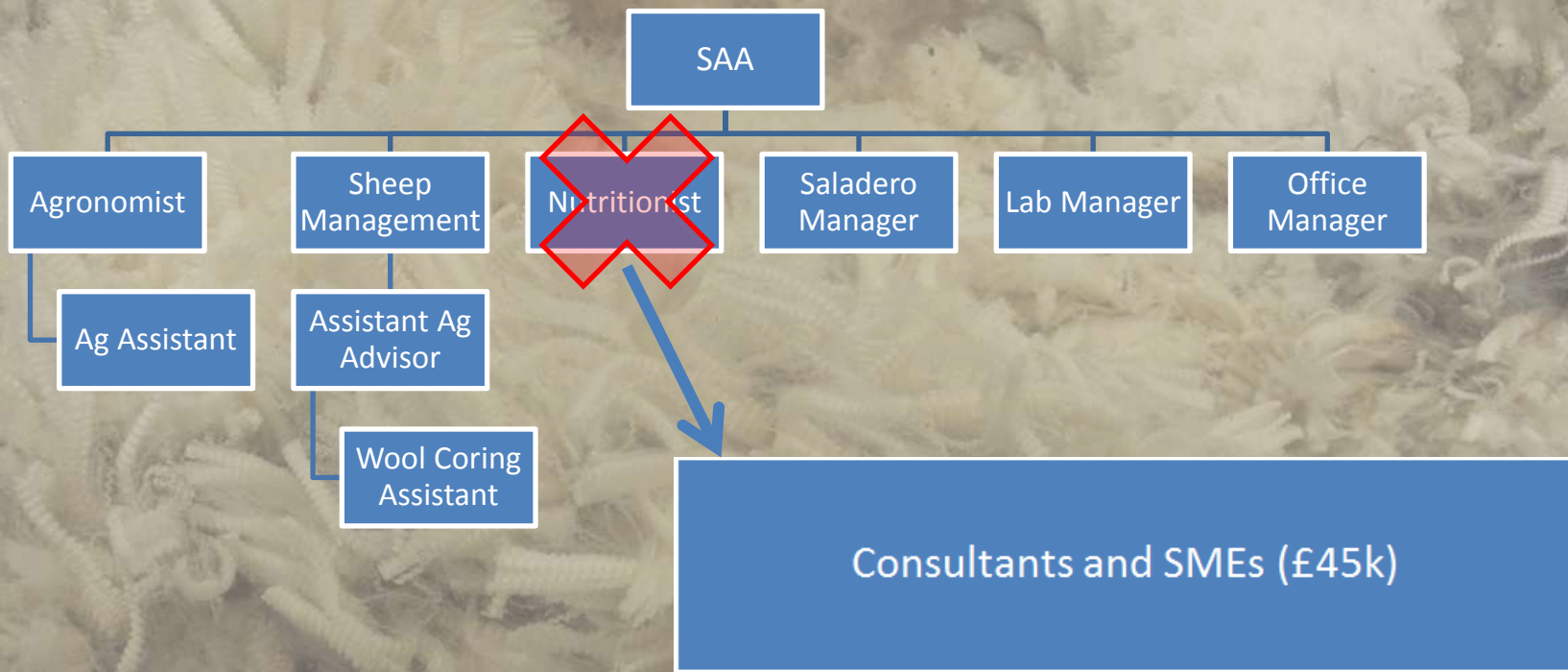
- Expo Prado
- Social Media
- Other Media

More farm advisory visits per advisor

# Engagement

2018





- **Farm business benchmarking**
- **Genetics programme guidance**
- **Fencing school**
- **Ideas.....??**

Engagement

2018

## Collaboration

- FIMCo
- FC
- FIDC
- Overseas organisations and institutions

## Wool Innovation Group

- QFW review

Hydatids

Beef

Reseed species and fertiliser

## Farmer led research

- Trace elements
- Other?

## Trace elements

- B12, Se, I, Zn.....?

Native species

## Supplementary / Strategic feeding

- Hogs
- Ewes

Research and  
Innovation



# Enabling / Services

Wool coring, grab sampling and mid-sides

Bug Busters

Certification and audit

- QFW
- ACO
- RWS

Genetics programmes

- Storage
- AI
- ET

FEC

Calafate control programme

Veterinary Services

Wool market information

Agriculture Apprenticeship Scheme

Pregnancy scanning services

Soil and Plant testing

# Policy and Regulation

Biosecurity

Environmental Regulation

FIP review

- Beef
- Focus on business improvement

Animal Welfare

Weeds legislation

Expand market access where applicable

Public Health



# Other Projects

- Saladero Multipurpose shed
- Saladero cattle yards